

Salt Retardant Additive

DryWall Salt Retardant Additive is a high specification additive for sand and cement renders which are used to retard the movement of salts to the internal face of the wall. DryWall also improves workability, reduces water demand yet allows the render to remain vapour permeable. DryWall is also useful for dry rot work and other problem situations. DryWall is easily diluted on site with water, to form a working gauging solution.

1 Preparation

- Remove existing plaster to the height outlined in the survey/specification but generally not less than **1m** or **300mm**, above the maximum level of the salt contamination whichever is the higher.
- Rake out the mortar joints to ensure a mechanical key.
- Remove any timber fixing grounds that are present in the masonry.
- Wash down the wall surface with clean water to remove any residual plaster dust.

2 Mixing

- Take a clean **25** litre drum or other suitable container and half fill it with water. Add **1** litre of DryWall then make up **25** litres in total with water. Shake or stir the drum for a few seconds to ensure even dispersion.

3 First Coat

- Prepare **3** parts sand to **1** part cement (*preferably sulphate resisting*) using the gauging water containing DryWall Salt Retardant Additive. The sand should be specified as washed sharp sand, suitable for rendering as laid down in BS EN13139:2002.
- Use the minimum of gauging water to achieve a dense coat; **an approximation is not more than 8 litres per 50kg dry mix.**
- Compact the mix well into the mortar joints and then render to give an overall thickness of no less than **12mm**.
- Where a total render thickness less than **20mm** is required it may be possible to apply the sand cement render in a single coat. This will depend largely on the workability of the mix and it may be necessary to reduce the quantity of the gauging water to obtain a stiffer consistency.
- **Do not over-trowel.** When the cement obtains its first set, scratch to form a key.

4 Second Coat/Subsequent Dubbing Out Coats

- Dub out to the required thickness, using the same mix as used for the first coat, Second or subsequent coats should be applied before the previous coat has finally set in order to obtain adhesion between coats. Scratch the surface to form a key for finishing plaster.
- **Do not over-trowel.**

5 Finishing Coat

- This coat should be 3mm Thistle Multi-finish or Board finish.

6 Important Notes

- Even though the new render will have water resistant properties it is still important to avoid bridging the damp proof course. Hence the plaster/render should always be cut short of the floor except in situations of high ground levels - see *diagrams*.
- Protect render from frost until fully cured.
- Any redecoration should be treated as a temporary whilst the wall dries out. To assist in drying no impermeable coatings such as vinyl wall paper be applied initially – for a minimum period of at least **12 months**. **If in doubt, contact Peter Cox.**
- Accelerated drying of the plaster by use of a heater or any other means is strictly not recommended and if carried out may cause cracking and have long term implications for the effectiveness of our work.
- As a consequence no claim for damage or failure will be accepted.
- This product contains a traceable dye which is activated if wetted. If mixing externally, protect accordingly.
- Spillages can be cleared with washing up liquid and a copious amount of water.

The importance of adhering to this specification as part of the rising dampness control cannot be over emphasised. If you or your builder are unsure of any of the requirements, please contact our office for advice before carrying out the replastering.

7 Health and Safety

- DryWall is a water based product of a low hazardous nature. However as for all chemical products precautions should be taken, including the use of overalls, gloves and goggles. Cement is alkaline and skin contact should be avoided.

8 Technical Information

Pack size: 4 Litres

Dilution: 1:24 with water

Coverage: 1 Litre of concentrate at 1:24 dilution is sufficient for 7m² of render at 12mm thick

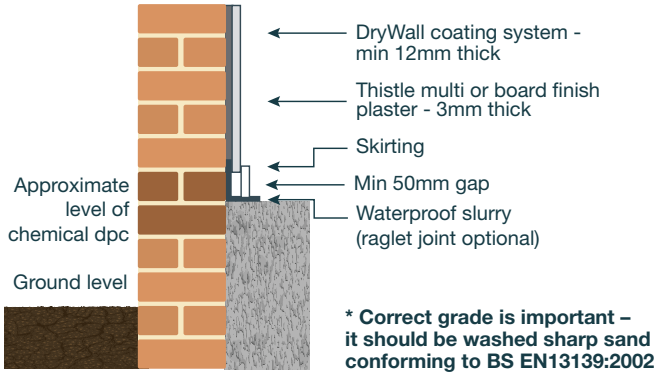
Storage: Store out of direct sunlight above 5°C

Shelf life: 24 months in unopened containers

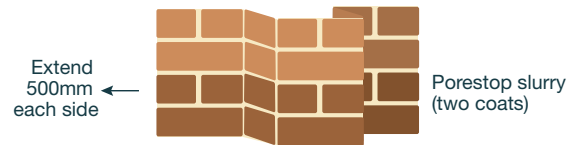
This product is designed for internal use only and specifically for the use and application described above. The data and advice given apply only when the product is used as directed.

Plastering & Renders

Recommended Method



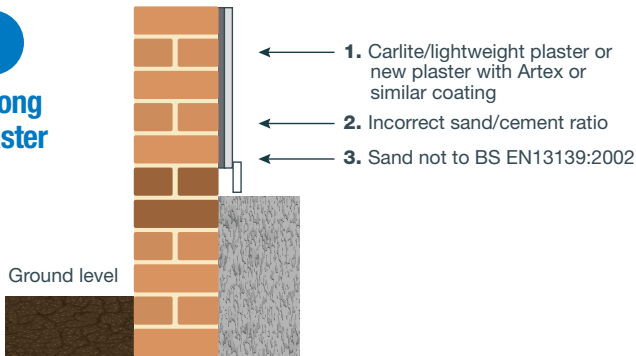
Additional Protection for Chimney Breasts



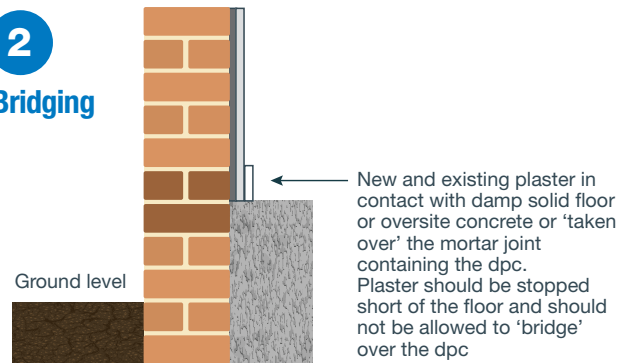
Height – 1m minimum or not less than 300mm above the maximum level of salt contamination – whichever is the higher. To be finished with Peter Cox DryWall Coating

Common Faults

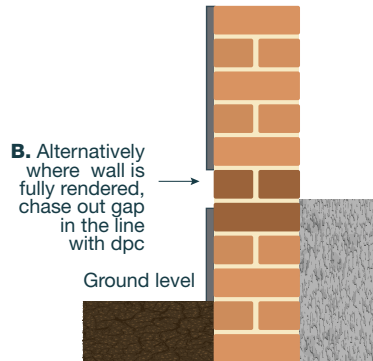
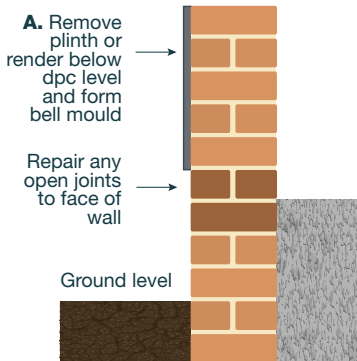
1 Wrong Plaster



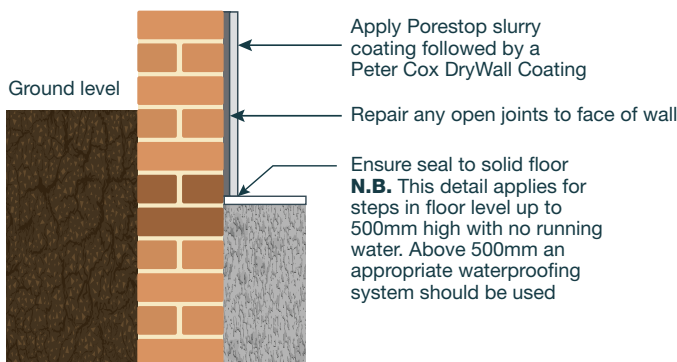
2 Bridging



External Renders – To Prevent Bridging



Varying Ground/Floor Levels



Rated 'Excellent' with over 1500 reviews



Peter Cox Ltd

Compass House
Crawley, West Sussex
RH10 9PY

Freephone 0800 789 500

www.petercox.com

enquiry@petercox.com